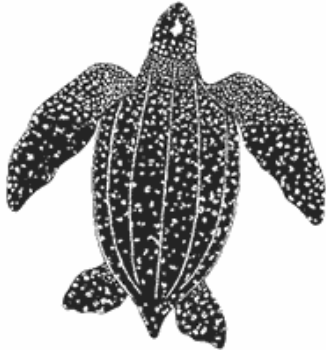
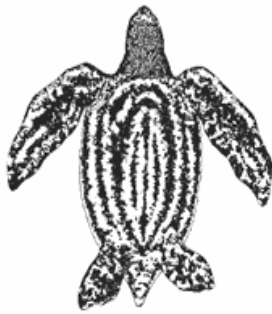


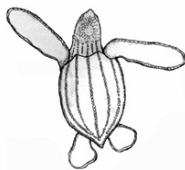
***Dermochelys coriacea*: Leatherback (Eng), Tortuga Laúd (Sp), Tortue luth (Fr)**



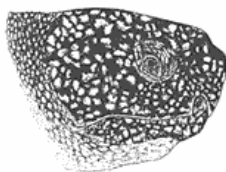
**Adult (top)**



**Adult (bottom)**



**Hatchling**



**Head**

***Physical Characteristics***

- Named for: Lack of a bony carapace (upper shell); leathery skin
- Length-adult (female): Carapace length of 4.5-6 feet (ca. 1.4-1.8 m), with 7 prominent ridges
- Length-hatchling: Carapace length of 2.4-2.6 in (ca. 60-65 mm)
- Weight-adult (female): 550-1400 lb (ca. 250-650 kg) [males to 2000 lb (920 kg)]
- Color-adult: Carapace and plastron (belly) both gray/black with white or pale spots
- Color-hatchling: Carapace is black with white spots, plastron is mottled black and white

***Caribbean Reproduction/Nesting***

- Peak nesting: March-July
- Number of nests: On average, 6-9 times per season at 9-11 day intervals
- Average clutch size: 80-90 yolked eggs per nest
- Incubation time: 50-75 days

***Global Status***

- Critically Endangered (World Conservation Union: IUCN *Red List*); international trade is prohibited by CITES; Protected (Annex II) by the Protocol concerning Specially Protected Areas and Wildlife (SPA) to the UNEP *Cartagena Convention*; Protected by the Inter-american Convention for the Protection and Conservation of Sea Turtles.

