



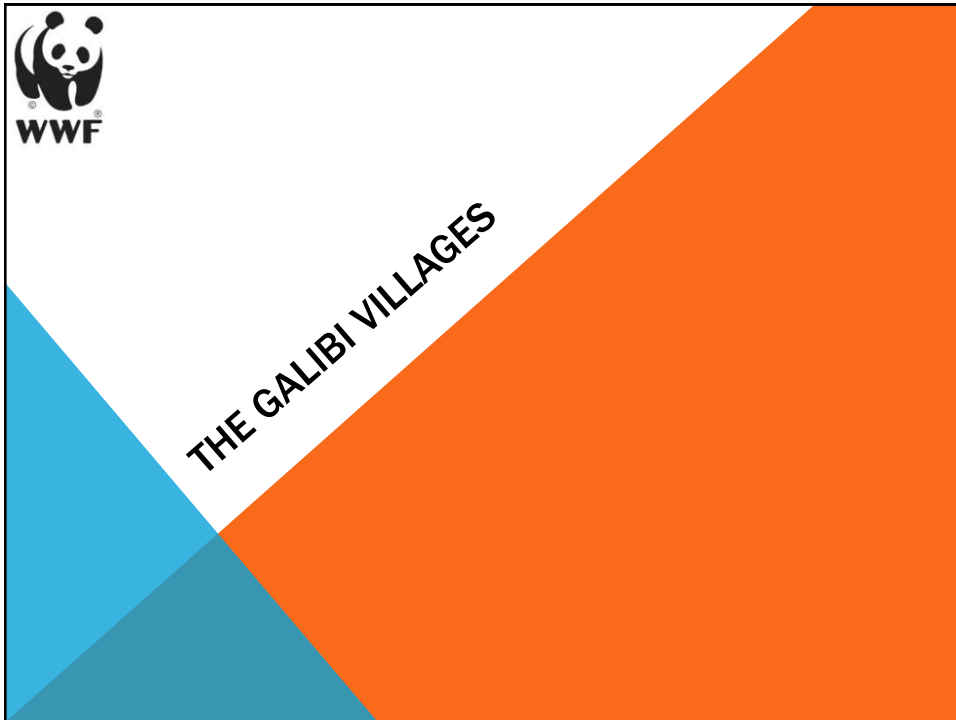
## STIDUNAL: MISSION AND PURPOSE



1. **Protection, promotion & actively supporting healthy environment in the Alusiaka area for all people living and working there.**
2. **Support, promote and participate in sustainable use of natural resources in this area**

### By:

- Removal of waste from the village & E & A on healthy environment
- Supporting (marine turtle) ecotourism and research
- Promoting alternative livelihoods in sustainable income sectors: diversification in tourism, bakeries, transportation, handicrafts, agriculture, etc
- Mapping/ measuring / monitoring (the potential of ) natural resources in the Alusiaka area
- Developing synergies with local, national & international organizations
- Undertaking economic activities in order to reach goals above.



## ABOUT GALIBI

1. Amerindian community – 2 villages: Langamankondre & Christiaankondre
2. 800 residents
3. Traditional lifestyles
4. North – East coast Suriname
5. Communications with other communities by sea / river travel only
6. Telephone access good; electricity between 18:00-23:00, at the mayor lodge 24-7; a medic point and a women's centre
7. Primary school only ; for higher education kids need to travel by boat to nearest city.
8. Near major nesting habitat for Green, Leatherback, and once, Olive Ridley turtles
9. Historically, consumers of / traders in turtle eggs (limited to early nesting season)
10. Currently, lucrative trade of turtle eggs by small part of the community mostly young men.
11. Livelihood dependent on artisanal (gill net) fisheries, small scale agriculture, and recently tourism (1992).



## GALIBI VILLAGES



## ABOUT GALIBI



## TRADITIONAL ROLE OF THIS COASTAL COMMUNITY



1. Mainly known as a fishing community
2. Limited role in conservation
3. Linked often to the unsustainable exploitation of turtle products
4. Little or no role in development and management of nesting habitats
5. Growing marine turtle & culture based eco-tourism
6. Growing interest in community development



## WHY WWF SUPPORT?

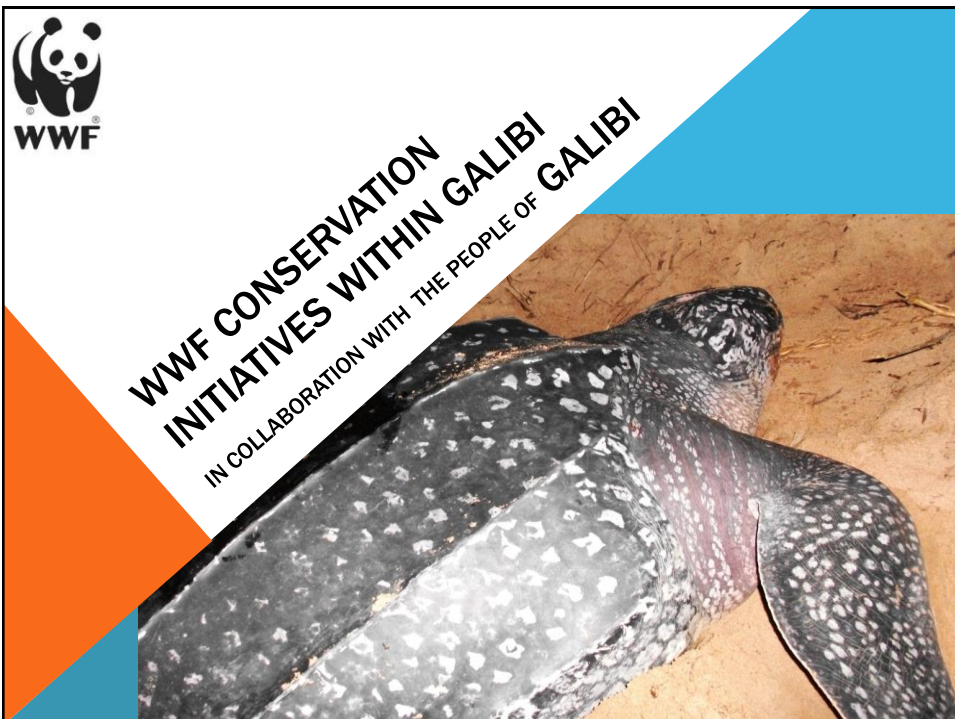


- Promote ownership of the resource
- Utilize local knowledge and expertise in management
- Work towards sustainability
- Demonstrate willingness to trust local people in conservation
- Build capacity and broaden experiences
- Divert conservation funds to communities rather than to non-local organizations.
- Recognize local communities and strengthening them to be stewards in sustainably managing their natural resources; especially sea turtles!

## CHANGING THE ROLE OF GALIBI...



1. Community support initiatives that demand changes in traditional lifestyles and beliefs (such as sea turtle egg consumption)
2. Residents willing to explore (tourism) attractions that are turtle - independent ... consider livelihoods beyond the turtle season.
3. Local tour operators train their own guides and hospitality staff
4. Local NGO, Stidunal, forms alliances with organizations such as WWF
5. Community leaders demand increased partnership in nature reserve management
6. Community successful response to the growing need for community development to sustainably manage nature resources and ensure involvement.





### VILLAGE CAPTAINS SHOW STRONG SUPPORT FOR COMMUNITY INITIATIVES TO CONSERVE MARINE TURTLES



CAPTAIN PANE  
ADDRESSES KADARU CLUB

CAPTAIN RAMSES  
SUPPORTS COMMITMENT  
MADE BY HIS COLLEAGUE



### LAUNCHING OF THE KADARU ENVIRONMENTAL CLUB



THE KADARU CLUB'S MISSION IS TO PROMOTE CONSERVATION OF SEA TURTLES AND SUSTAINABLE DEVELOPMENT IN GALIBI.



CLUB LEADERS



ENTHUSIASTIC STUDENTS



CLUB ACTIVITIES EXTEND BEYOND THE BEACH



## EARTH DAY: CLUB MEMBERS MAKE PLEDGES TO SUPPORT THE PLANET'S BIODIVERSITY



## SUPPORT FOR WOMEN'S CRAFT CENTRE THE WOMEN IN THE CENTER PRODUCE AND SELL POTTERY AND BEAD JEWELRY







### EDUCATION & AWARENESS THROUGH START UP OF RADIO GALIBI



### OPENING CEREMONY

## EDUCATION & AWARENESS THROUGH START UP OF RADIO GALIBI



### TESTING THE EQUIPMENT

## INSTITUTIONAL STRENGTHENING OF STIDUNAL



## INSTITUTIONAL STRENGTHENING OF STIDUNAL



## CAPACITY BUILDING IN THE VILLAGE



Handing out certificates from Tourism training in May, 2011, at Awala Yalimapo (Caret 2 Project)





THE JUNGLE TRAIL, SUPPORT FOR ALTERNATIVE LIVELIHOODS



UNVEILING THE SIGN BOARD  
DONATED BY WWF

THE JUNGLE TRAIL, SUPPORT FOR ALTERNATIVE LIVELIHOODS



**THE JUNGLE TRAIL, SUPPORT FOR ALTERNATIVE LIVELIHOODS**



**INVOLVEMENT OF ALL STAKEHOLDERS  
IN THE VILLAGE**



**THE JUNGLE  
TRAIL, SUPPORT  
FOR EDUCATION  
& AWARENESS**





## THE JUNGLE TRAIL, SUPPORT FOR ALTERNATIVE LIVELIHOODS



THE JUNGLE TRAIL, THE MAKING..

## COMMUNITY NGO PARTICIPATES IN RESEARCH PROGRAMMES.



Participation in :**deployment of satellite transmitters**

**monitoring of sea turtles**

**collecting biometric data**

*Coming years, starting this season.....*

**Camera trapping for monitoring jaguars**

**which attack nesting Greens**

**increase knowledge on monitoring of nesting**

**Flippertagging**



## WHY THESE PROJECTS?

- To increase positive attitudes towards marine turtles.
- To change behavior that impairs conservation.
- There is a need to communicate more with young persons and those who still contribute significantly to community development.
- Initiation of and participation in projects that create alternative income generation for poaching and appreciation of natural resources and education of the community is absolutely necessary and must be encouraged and facilitated.



## AND STIDUNAL IS NOT ALONE, ... KADARU NATURE CLUB:

**HOPE** FOR CONSERVATION!



**GRACIAS/ THANK YOU!**